



JUNIOR PARENT NIGHT

WEDNESDAY, NOVEMBER 8, 2017

ROOM 122

Introductions

- Ms. Lauren White – A-B
- Mr. Andy Servideo – C-HE
- Ms. Erin Healy-Botelho – HI-N
- Mr. Mark Cedorchuk – O-Z

Agenda

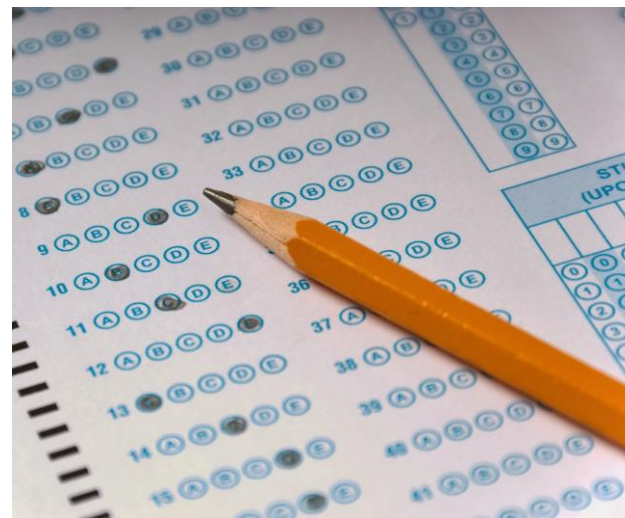
Our goal for this evening is to present a broad overview of how the college admissions process works in order to help you assist your children. We will be discussing:

- Standardized tests
- College admissions criteria
- Naviance
- Finding the right fit



Standardized Tests

- PSATs: sophomore and junior year
- SATs and ACTs: junior and senior year
- Optional Essay/Writing portion
- Test Optional Colleges
- Tests are used for merit-based scholarships
- We recommend students take both the SAT and ACT at least once and take whichever test they did better on an additional time
- Students often improve their scores the second time



PSATs

- PSATs were taken on October 11, 2017 by sophomores and juniors
- Scores will be available Dec. 13th through www.collegeboard.org
- Students will need to create an account, if they haven't already done so
- **Make sure a second account is not created**
- Juniors can analyze their PSAT results through Kahn Academy

Kahn Academy



Students need to create a Kahn Academy account and link it with their College Board account.

To create and link accounts, follow these steps:

1. Go to satpractice.org to create an account on Kahn Academy. This was done sophomore year in Group Guidance
2. Choose to link your Kahn Academy account to your College Board account
3. Create or sign in to your College Board account and click “send” to send your scores

SAT/ACT *side by side comparison*

	SAT	ACT
Why Take It	Colleges use SAT scores for admissions and merit-based scholarships.	Colleges use ACT scores for admissions and merit-based scholarships.
Test Structure	<ul style="list-style-type: none">• Reading• Writing & Language• Math• Essay (Optional)	<ul style="list-style-type: none">• English• Math• Reading• Science Reasoning• Essay (Optional)
Length	<ul style="list-style-type: none">• 3 hours (without essay)• 3 hours, 50 minutes (with essay)	<ul style="list-style-type: none">• 2 hours, 55 minutes (without essay)• 3 hours, 40 minutes (with essay)
Reading	5 reading passages	4 reading passages
Science	None	1 science section testing your critical thinking skills (not your specific science knowledge)

Cont.

Math	Covers: <ul style="list-style-type: none">• Arithmetic• Algebra I & II• Geometry, Trigonometry and Data Analysis	Covers: <ul style="list-style-type: none">• Arithmetic• Algebra I & II• Geometry and Trigonometry
Calculator Policy	Some math questions don't allow you to use a calculator.	You can use a calculator on all math questions.
Essays	Optional. The essay will test your comprehension of a source text.	Optional. The essay will test how well you evaluate and analyze complex issues.
How It's Scored	Scored on a scale of 400–1600	Scored on a scale of 1–36

Registering for SATs/ACTs

- Registration is a quick process once an account is created
- Registration done through CollegeBoard and ACT accounts
- Register Early!

Cost

SAT

No Essay - \$46

Essay - \$60

Late Fee - \$29

Waitlist Fee - \$49

ACT

No Writing - \$46

Writing - \$62.50

Late Fee - \$29.50

Standby - \$53

SAT Test Dates

2017 - 2018 SAT DATES			
TEST DATE	REGISTRATION DATE	LATE REGISTRATION	
Aug. 26, 2017	July 28, 2017	Aug. 8, 2017	
Oct. 7, 2017	Sept. 8, 2017	Sept. 19, 2017	**AT FHS
Nov. 4, 2017	Oct. 5, 2017	Oct. 17, 2017	**AT FHS
Dec. 2, 2017	Nov. 2, 2017	Nov. 14, 2017	
Mar. 10, 2018	Feb. 9, 2018	Feb. 20, 2018	
May 5, 2018	Apr. 6, 2018	Apr. 17, 2018	**AT FHS
June 2, 2018	May 3, 2018	May 15, 2018	

REGISTER FOR SATs @ sat.org/register

ACT Test Dates

2017 - 2018 ACT DATES			
TEST DATE	REGISTRATION DATE	LATE REGISTRATION	
Sept. 9, 2017	July 28, 2017	Aug. 11, 2017	
Oct. 28, 2017	Sept. 22, 2017	Oct. 6, 2017	**AT FHS
Dec. 9, 2016	Nov. 3, 2017	Nov. 17, 2017	
Feb. 10, 2018	Jan. 5, 2018	Jan. 19, 2018	
Apr. 14, 2018	Mar. 9, 2018	Mar. 23, 2018	**AT FHS
June 9, 2018	May 4, 2018	May 18, 2018	
July 14, 2018	June 8, 2018	June 22, 2018	

REGISTER FOR ACTs @ www.actstudent.org/start

Services for Students with Disabilities (SSD)

- Eligibility for testing accommodations is determined by the ACT & College Board
- Submit requests during the first half of junior year
- It takes up to 7 weeks from the time a completed application is received until a determination is made
- Only request accommodations if absolutely necessary
 - The extended time on the test makes for a very long exam

College Admissions Criteria

1. High School Transcript
2. Colleges are trying to figure out what type of student you are and if you will be successful on their campus.
3. In general, colleges consider the following:
 - Grade Point Average (GPA)
 - The academic rigor of each course
 - Consistency/progress over the three-year period
4. ACT/SAT/Subject Tests (if applicable)
5. Essays/Personal Statements

Cont.

6. Activities/Community Service/Interests

- Many colleges tend to value consistent and long-term commitments
- Being fully invested in one area is preferred to surface involvement in several areas

7. Letters of recommendation

8. Honors/Special Awards

9. Legacies, Individual considerations.

***For specialized majors such as Music or Art students will also need Portfolio/Auditions*

Naviance

Welcome to Family Connection
Nice to see you again! Please log in.

e-mail
 ← Student ID Number

password
 ← Last Name

remember me

[Log In](#)

[forgot your password?](#) [need additional help?](#)

<https://connection.naviance.com/family-connection/>

Email: Student ID Number

Password: Last Name (First Letter Capitalized)

Foxborough High School

120 South Street

Foxborough MA 02035-1723

p: (508) 543-1616

search for colleges:

[MORE SEARCH OPTIONS >>](#)

resources

[> test scores](#)

my colleges

[> colleges I'm thinking about](#)

[> colleges I'm applying to](#)

[> letters of recommendation](#)

[> Upcoming college events](#)

Upcoming college visits

No upcoming visits.

college research

[> SuperMatch™ college search](#)

[> college match](#)

[> college compare](#)

[> college lookup](#)

[> college search](#)

[> college resources](#)

[> college maps](#)

[> scattergrams](#)

[> acceptance history](#)

scholarships & money

[> scholarship match](#)

[> scholarship list](#)

[> scholarship applications](#)

[> national scholarship search](#)

search for colleges:

[MORE SEARCH OPTIONS >>](#)

my colleges

- > [colleges I'm thinking about](#)
- > [colleges I'm applying to](#)
- > [college visits](#)

college research

- > [SuperMatch™ college search](#)
- > [college match](#)
- > [college compare](#)
- > [college lookup](#)
- > [college search](#)
- > [college resources](#)
- > [college maps](#)
- > [scattergrams](#)
- > [acceptance history](#)

scholarships & money

- > [scholarship match](#)
- > [scholarship list](#)
- > [scholarship applications](#)
- > [national scholarship search](#)

college lookup

Look up by name:

Look up by college group:

Look up by country:

Look up by USA state:

Look up by letter:

[A](#) [B](#) [C](#) [D](#) [E](#) [F](#) [G](#) [H](#) [I](#) [J](#) [K](#) [L](#) [M](#) [N](#) [O](#) [P](#) [Q](#) [R](#) [S](#) [T](#) [U](#) [V](#) [W](#) [X](#) [Y](#) [Z](#)



College Lookup – Colleges can be searched by name, group, country, state, and letter.

search for colleges:

[MORE SEARCH OPTIONS >>](#)

my colleges

- > [colleges I'm thinking about](#)
- > [colleges I'm applying to](#)
- > [college visits](#)

college research

- > [SuperMatch™ college search](#)
- > [college match](#)
- > [college compare](#)
- > [college lookup](#)
- > [college search](#)
- > [college resources](#)
- > [college maps](#)
- > [scattergrams](#)
- > [acceptance history](#)

scholarships & money

- > [scholarship match](#)
- > [scholarship list](#)
- > [scholarship applications](#)
- > [national scholarship search](#)

college compare

College 1: :: [college picker](#)

College 2: :: [college picker](#)

College 3: :: [college picker](#)

College 4: :: [college picker](#)

College 5: :: [college picker](#)

College 6: :: [college picker](#)

College 7: :: [college picker](#)

College 8: :: [college picker](#)

College 9: :: [college picker](#)

College 10: :: [college picker](#)

College Compare – Up to 10 Colleges can be compared to each other.

search for colleges:

 [MORE SEARCH OPTIONS >>](#)**my colleges**

- > [colleges I'm thinking about](#)
- > [colleges I'm applying to](#)
- > [college visits](#)

college research

- > [SuperMatch™ college search](#)
- > [college match](#)
- > [college compare](#)
- > [college lookup](#)
- > [college search](#)
- > [college resources](#)
- > [college maps](#)
- > [scattergrams](#)
- > [acceptance history](#)

scholarships & money

- > [scholarship match](#)
- > [scholarship list](#)
- > [scholarship applications](#)
- > [national scholarship search](#)

Compare Colleges

The averages below are for students from your high school that have been accepted to that particular college.

School averages are displayed in green when your number is higher and in red when your number is lower.

Your PSAT score, if available, has been converted to the equivalent SAT score and compared to the average single SAT score of an accepted student. Your PLAN score can also serve as a direct estimate of your ACT score and can be compared to the average ACT score of an accepted student.

The column labeled "Accept" shows the number of students accepted out of the number of students that applied.

[:: add another college](#)

College Compare (2011 - 2018)

	GPA	PSAT to SAT 1600	PSAT to SAT 2400	Single SAT 1600	Combined SAT 1600	Single SAT 2400	Combined SAT 2400	PLAN to ACT	ACT	IB	Accept
Andy Servideo	3.35	-	-	1110	1110	-	-	-	24	-	-
Assumption Coll	3.33	-	1608	-	1080	1608	1628	22	22	-	44/52
Northeastern Univ	4.17	1400	2001	1400	1350	2001	2013	31	31	-	58/164
Salem State Uni	3.18	-	1573	-	1058	1573	1586	23	23	-	42/66
Stonehill Coll	3.68	-	1747	-	1177	1747	1765	24	24	-	44/70
U of MA Amherst	3.87	1248	1825	1248	1227	1825	1839	27	27	-	230/410

A comparison chart between the student and the college standards.

family connection

colleges

careers

about me

search for colleges:

[MORE SEARCH OPTIONS >>](#)

resources

> [test scores](#)

my colleges

> [colleges I'm thinking about](#)

> [colleges I'm applying to](#)

> [letters of recommendation](#)

> [Upcoming college events](#)

Upcoming college visits

No upcoming visits.

college research

> [SuperMatch™ college search](#)

> [college match](#)

> [college compare](#)

> [college lookup](#)

> [college search](#)

> [college resources](#)

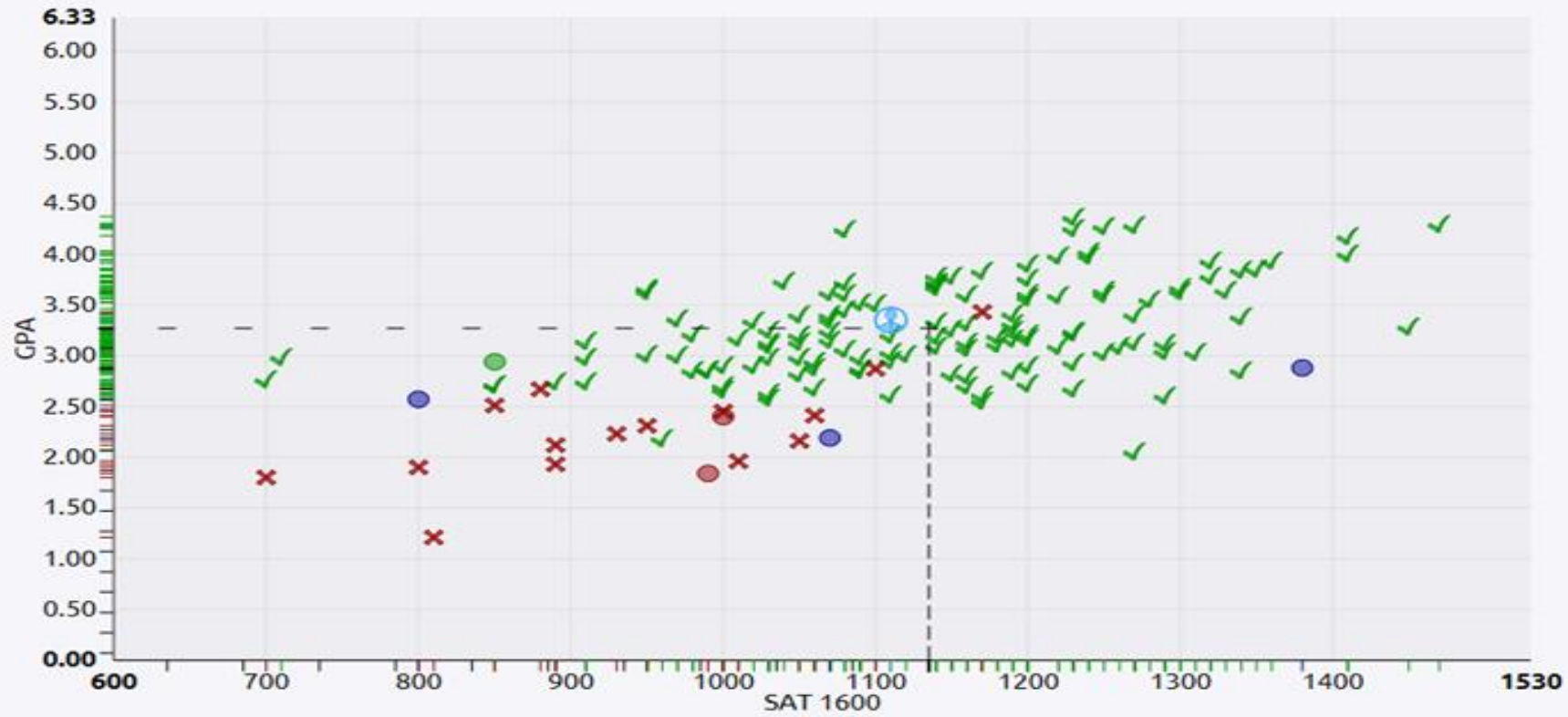
> [college maps](#)

> [scattergrams](#)



Scattergrams - Average accepted GPA and Test scores will be displayed on a graph as well as anonymous admission results from only FHS students. The user will see where they fit on the graph as well.

Comparing Weighted GPA with SAT (1600 Scale)



Legend

Accepted

Waitlisted/Accepted

Waitlisted/Unknown

Waitlisted/Denied

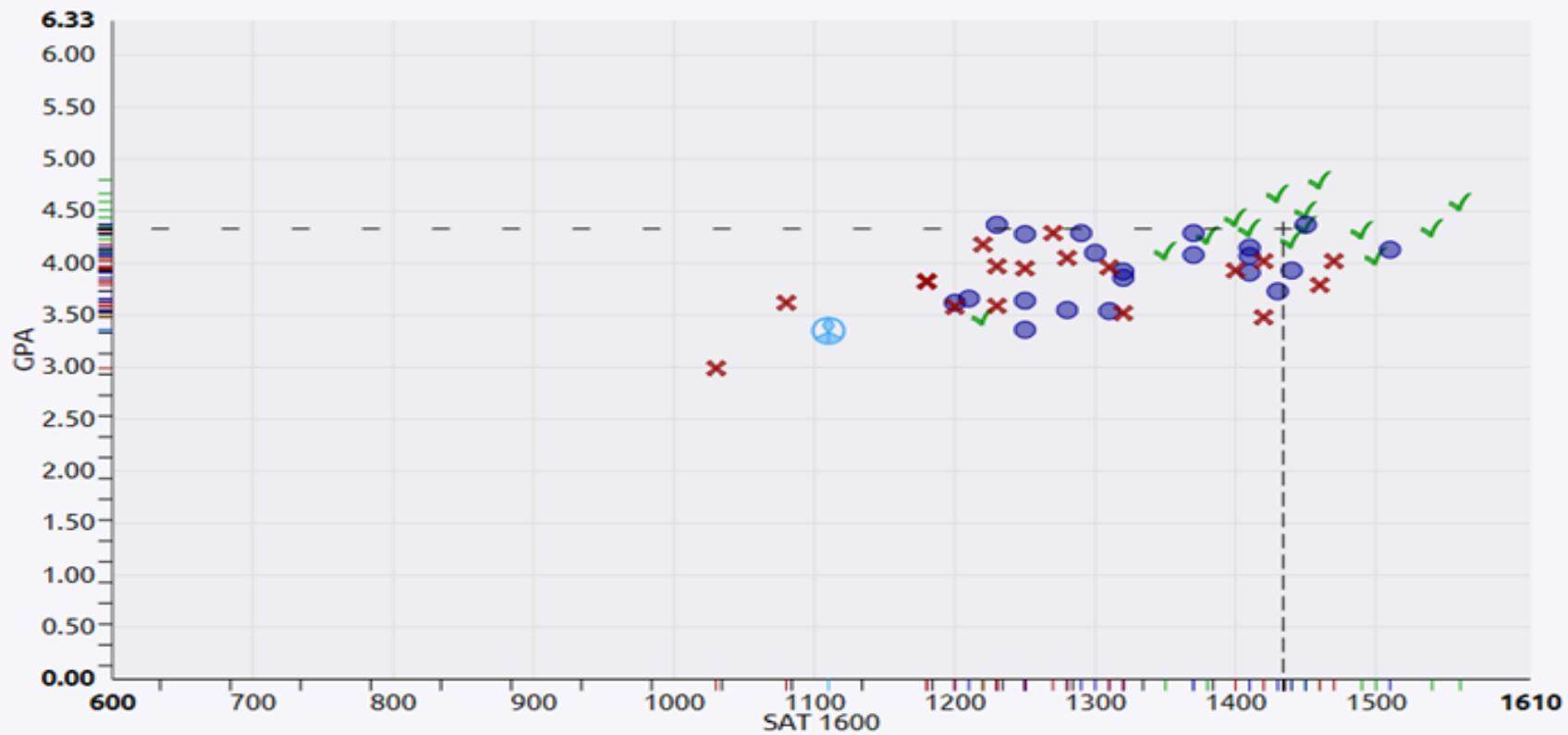
Denied

You









Click on legend icons or headers to hide each type or group in the scattergram. Doubleclick to reset zoom.

Comparing Weighted GPA with SAT (1600 Scale)

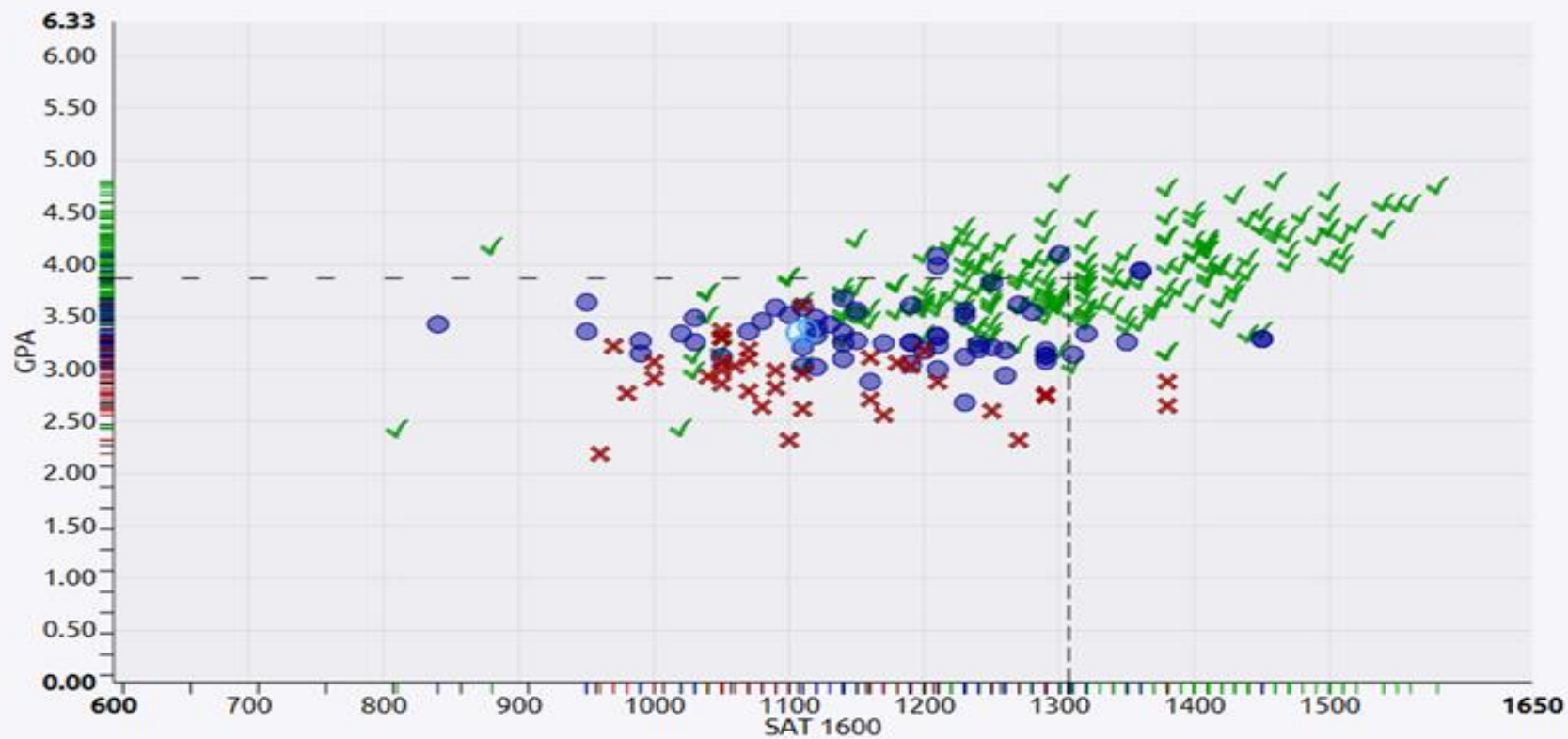


Legend

 You	Accepted 	Waitlisted/Accepted 	Waitlisted/Unknown 	Waitlisted/Denied 	Denied 
---	--	---	--	---	--

Click on legend icons or headers to hide each type or group in the scattergram. Doubleclick to reset zoom.

Comparing Weighted GPA with SAT (1600 Scale)



Legend

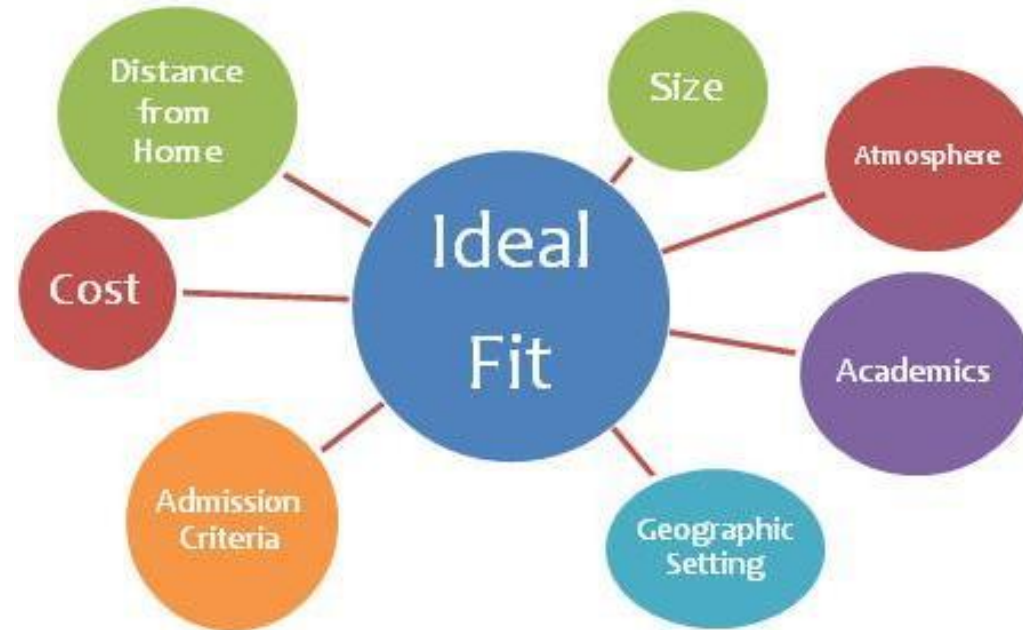
	Accepted	Waitlisted/Accepted	Waitlisted/Unknown	Waitlisted/Denied	Denied
 You					

Click on legend icons or headers to hide each type or group in the scattergram. Doubleclick to reset zoom.

Finding the Right Fit

Aspects to consider:

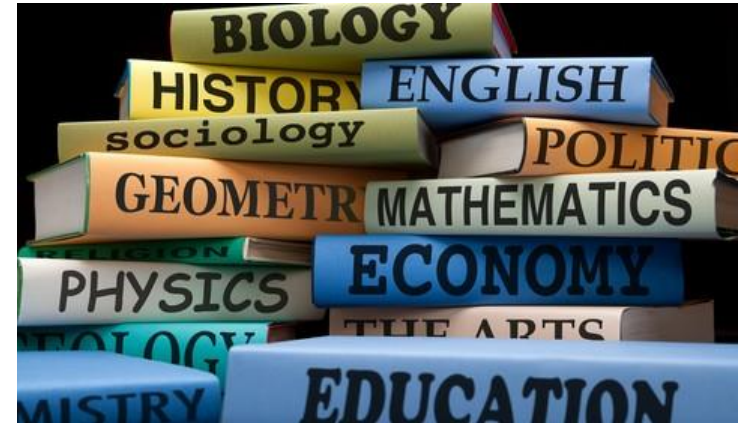
1. Academic
2. Demographic
3. Social
4. Financial



Academic Fit

- Students should be looking at colleges that match their academic abilities

- Reach Schools
- Target Schools
- Safety Schools



- Majors, internships/externships, study abroad opportunities
- *If your child has academic, emotional, and/or health needs, please speak with your child's Guidance Counselor or Special Ed liaison for the College Packet for additional resources.

Demographic Fit

- Size: Big/small/medium
- Location: Close to home/far away, urban/suburban
- Student population: Male/female ratio, diversity, religious affiliation, etc...



Social Fit

- Visits/Tours
- Athletics, Extracurricular Activities, Residence Life/Dorms, Environment beyond the campus
- Overall Vibe



Financial Fit

- The cost of college is very expensive
- Figure out what is “affordable”
- Find schools that match other aspects of fit with budget
- Weigh your options
- Understand how much will need to be paid back in loans



Wrap up

- There are several layers and complexities to the entire college process and each student's experience is slightly different
- It is important for students, parents, and Guidance to work together to make the experience smooth and positive
- Questions

Survey

<https://tinyurl.com/y8y4q6vr>